

# EASY PAINT PRODUCT SPECIFICATION

## WATERBASED PEARL SERIES - INTERIOR & EXTERIOR



### PRODUCT DESCRIPTION :

Easy Paint is Vinly acrylic copolymer and Styrene Acrylic Copolymer Emulsion formulated for economical for good rub resistance, smooth surface, odour less, small crack sealer, free from powder(chalk), no primer or undercoat required, easy to apply, with free from lead and mercury which is specially formula for exterior and interior wall. This premium interior is formula to make easy to use. Performance at least 4 years protection against fungus and algae, chalking and flaking. (term & condition).

### RECOMMENDED USES :

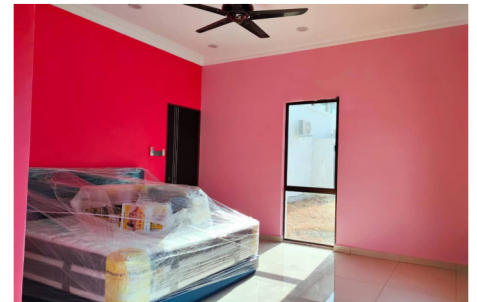
For decoration and protection of interior and exterior.

### STANDARD AND INDEPENDENT REPORT :

SIRIM TEST REPORT NO : J20095081653

### COMPOSITION :

Pigment	: Titanium Dioxide, Mineral Extender, Iron Oxide, Black Carbon & Organic Pigment
Blinder	: Vinly acrylic copolymer and Styrene Acrylic Copolymer Emulsion
Base adjuster	: Water
Properties	
Colour	: Wide range of colour
Appearance	: Matte finish
Recommended coat	: Minimum 2 layer coats
Drying Time	: 35 min Dependent on temperature and humidity.
Recoating	: 45min - 2 hour
Theoretical Cover area	: 10 -13 m / square per coat (Coverage is dependent on substrate condition)



### SURFACE PREPARATION :

1. Remove all loose, defective paint or powdery residues by wire brush, scraping, or high pressure water jet.
2. Treat any areas affected with anti fungus grown, repair cracks, allow all surfaces dry prior painting.
3. Avoid painting when the moisture high.  
\*Recommended painting requires the moisture is below 10% and alkalinity below pH9.

### RECOMMENDED PAINTED SURFACES :

Type of substrate	
Masonry	
Sealer	: with or without (Dependent on necessity)
Creation product	without sealer or undercoat
Finish	: PEARL colour minimum 2 layer
Standard packing	: 5liter (6.2+kg) 18liter (22+kg)



### APPLICATION GUIDE :

#### Optional uses :

Apply directly PEARL on wall's surface

**Equipment** : Brush or Roller  
(stir and apply)

**Air Spray** : Dilute with 1-2% water

**Clean up wash** : Quick clean up  
equipment with thinner after  
use. Stain difficult to remove  
after dry.